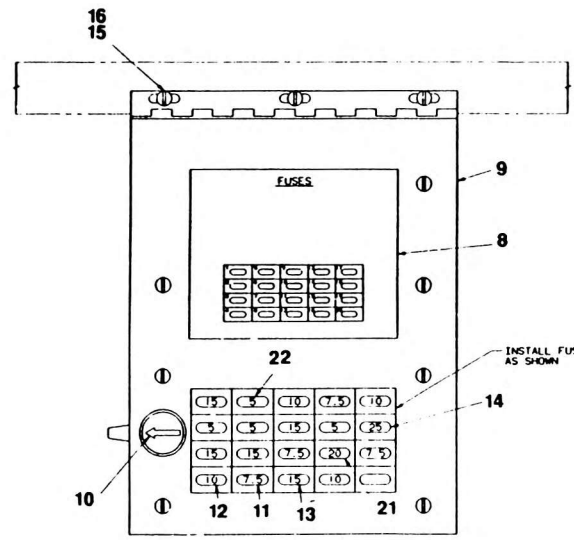
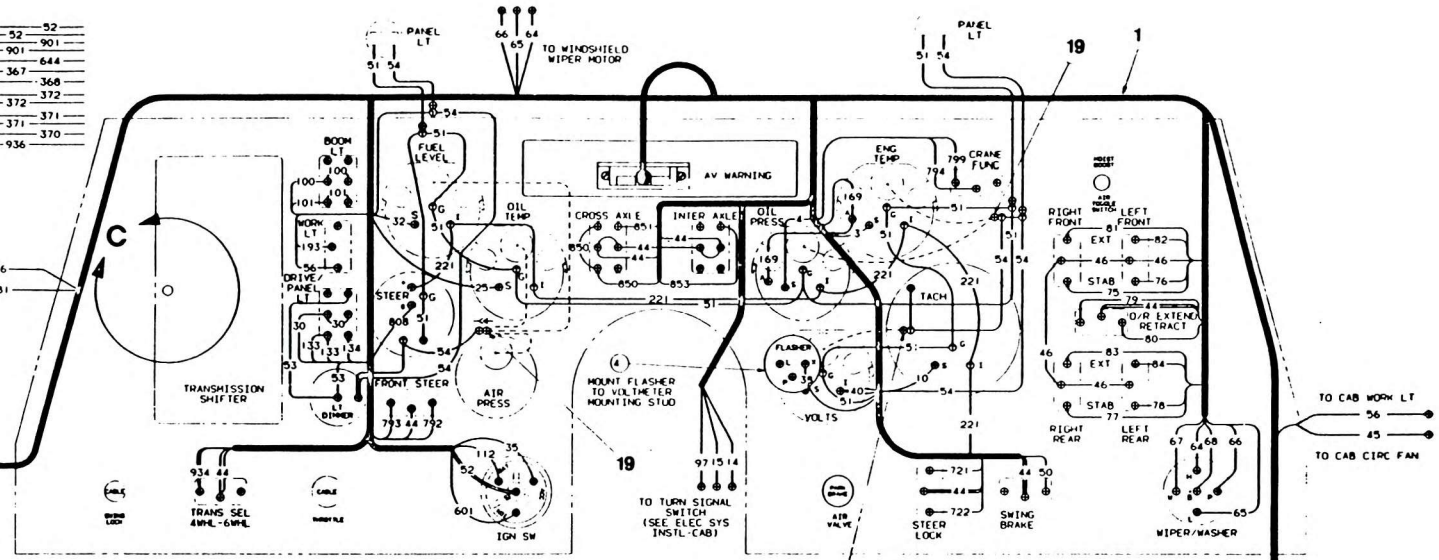
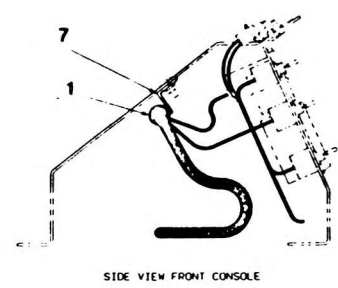


DETAIL C  
ELECTRIC WIPER  
TRANSMISSION CONTROL

TO CAB SPOTLIGHT  
PROVIDED FOR  
CD RADIO

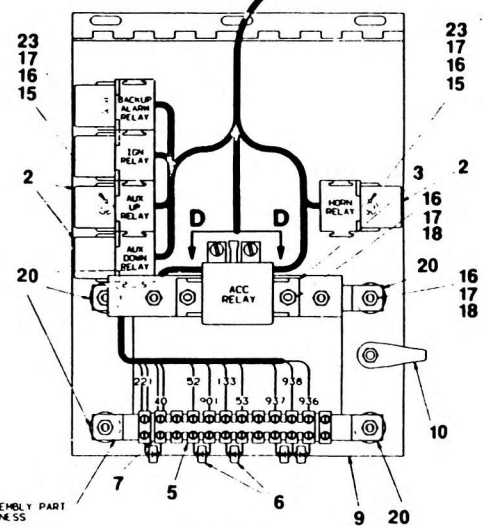
TO SWIVEL  
& S/S

TO REAR OF CAB  
(SEE ELECT SYS INSTL-CAB)

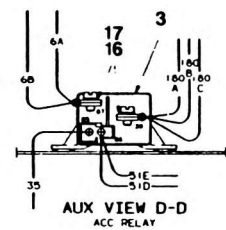


FUSE BLOCK ASSEMBLY PART  
OF CONSOLE HARNESS

NOTE, TAPE AND STOW ALL UNUSED WIRES



DIODE POLARITY  
MUST BE AS  
SHOWN



LEGEND

SYMBOL	SIZE & TERMINAL
⊙	#4 EYELET
○	#6 EYELET
○	#8 EYELET
○	#10 EYELET
○	1/4 EYELET
○	5/16 EYELET
○	3/8 EYELET
○	7/16 EYELET
○	1/2 EYELET
○	1/4 FASTON
■	SPLICE
→	MALE PIN
←	FEMALE RECEPT
○	LAMP SOCKET
○	T-TAP